

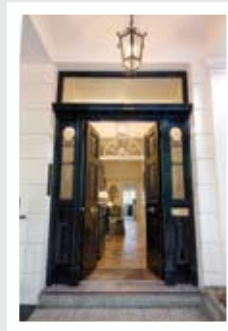
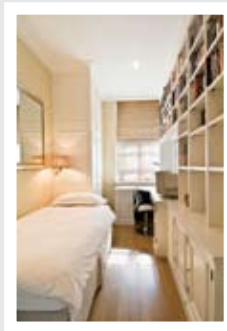
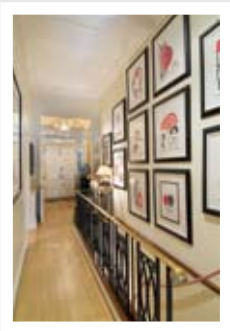


37 Eaton Square | SW1

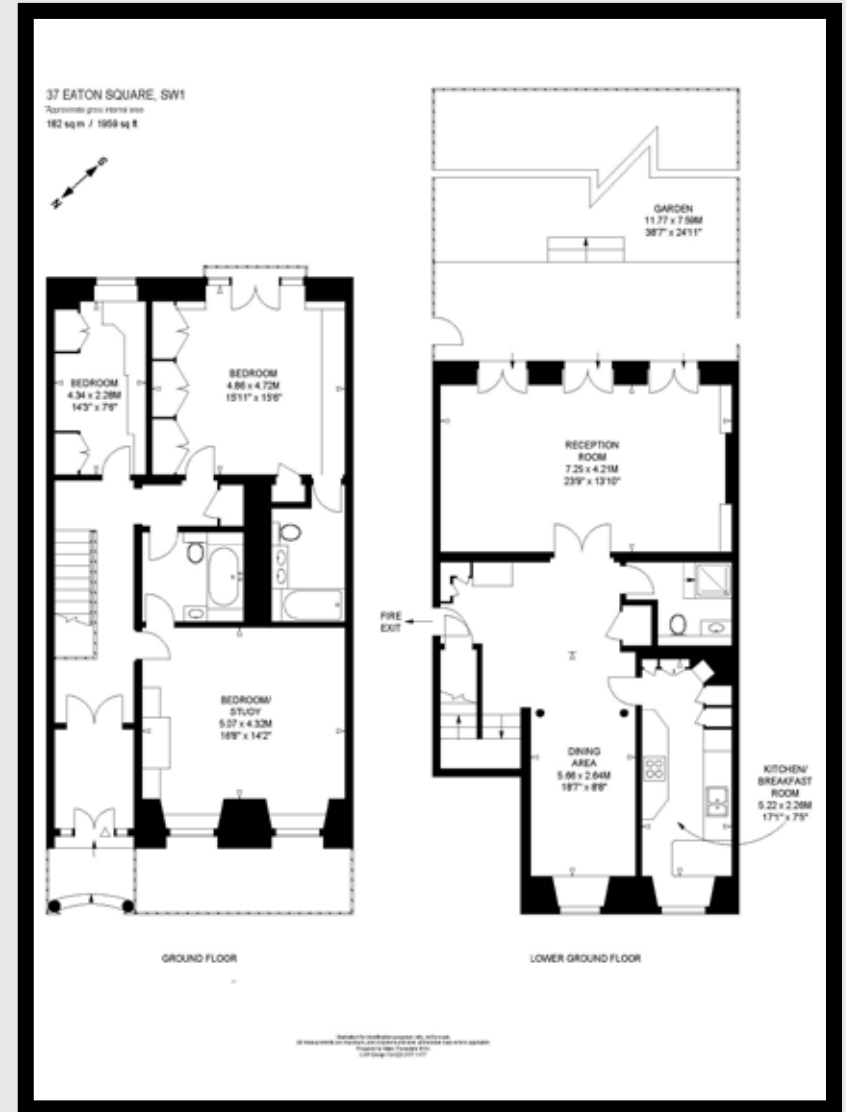
37, Eaton Square | SW1

Belgravia

This delightful ground and garden floor property has its own imposing pillared street entrance. There is good entertaining space on the garden level, comprising a drawing room, with 3 pairs of French windows opening onto the garden, and a dining hall and separate kitchen / breakfast room. The bedroom accommodation on the raised ground floor benefits from 12 ft high ceilings. The two principal bedrooms are well-proportioned with ample storage and en suite bathrooms. There is a third bedroom / study and a shower room. The South-facing garden (held on licence) is stone paved with shrub borders. There is a secondary entrance, with lift access, at the garden level, and the building has a porter.



Please note that property information including text, photographs and plans are only for the guidance of prospective purchasers and must not be relied upon as statements of fact. No property information constitutes part of an offer or contract. The descriptions provided herein represent the opinion of the author and whilst given in good faith should not be construed as statements of fact. Nothing in this information shall be deemed a statement that a property is in good condition otherwise nor that any services or facilities are in good working order. All measurements are approximate.



Entrance hall · Drawing room · Dining room · Kitchen/Breakfast room · Two en suite bedrooms · Third bedroom/study · Shower room · Garden (held on licence) · Access to communal gardens · Porter

Leasehold: 63 years

£4,375,000